

ROLLON[®]
BY TIMKEN

Robot Transfer Units: increased efficiency in automated production lines

Luca Brioni | Actuators and Systems BU sales manager

14/02/2025





Founded in 1975 in Milan, Italy, Rollon designs and manufactures **linear components, actuators and systems** for industrial motion, with a special focus on **tailored solutions** aimed at **innovating** and meeting the **evolving needs** of the market.

In 2018, **Rollon** was acquired by **The Timken Company**, becoming the flagship brand for linear motion within the Industrial Motion division of Timken.

In 2023, Timken acquired **Nadella, Chiavette Unificate, Durbal, Shuton-Ipiranga** and **Rosa Sistemi**, scaling **Rollon's** portfolio and promoting new operational synergies and geographical expansion opportunities.

Thanks to that, **Rollon** is now able to offer an even more comprehensive product range: from **linear components, actuators and systems** to **ball screws** and **rotational units**.

The word "TIMKEN" in a large, white, bold, all-caps sans-serif font, centered on a dark background.



durbal



Group overview



11

Countries

14

Manufacturing sites

+80k

Production area sqm

6

Brands

+1200

Employees

Our Portfolio

Whether you find the perfect fit within our portfolio or you look for a solution tailored to your needs our engineering teams all around the world are ready to offer extensive technical competence and deep vertical industry knowledge.



> **Linear components**

The linear components product range encompasses a wide range of linear, telescopic and curved guides.



> **Actuators and systems**

The actuators and systems product range includes actuators, multi-axes, robot transfer unit and circular systems.



> **Ball screws**

The ball screws product range includes a full range of high precision, high load and transport ball screws.

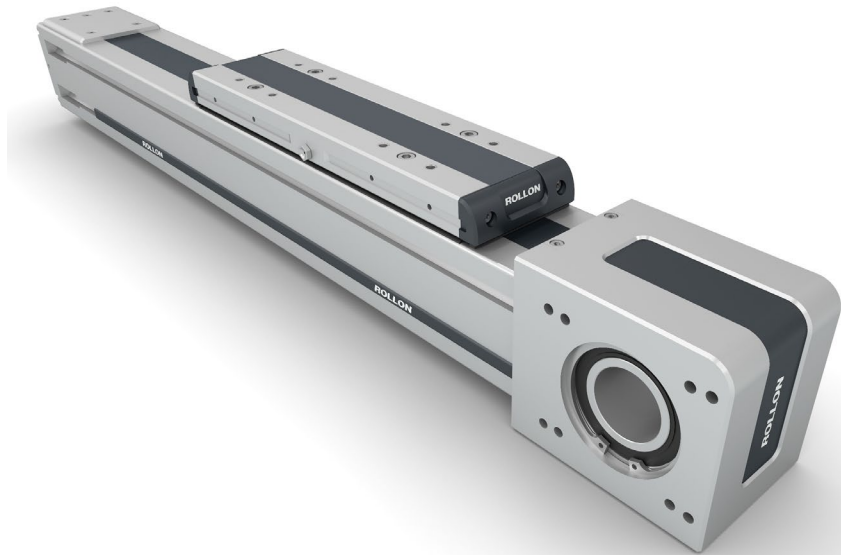


> **Rotational units**

The rotational units portfolio features rod ends, spherical plain bearings and needle bearings.

Actuators

Linear actuators are equipped with belt, ball screw or rack and pinion drives, depending on the speed, precision and load capacity requirements of the application.



> Belt driven linear actuators



> Ball screws driven linear actuators



> Rack and pinion driven linear actuators

Multi-Axis



> YX Multi-Axis



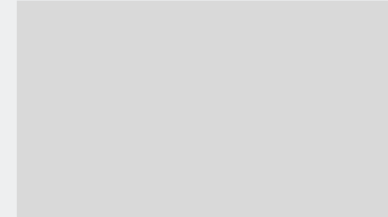
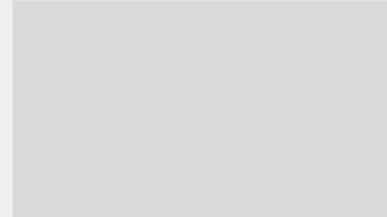
> XYZ Multi-Axis



> YX Multi-Axis (Steel)



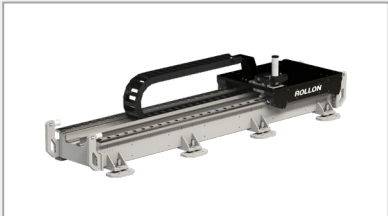
> H-Bot



Robot Transfer Units



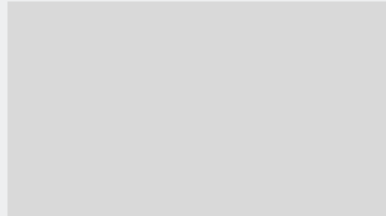
> RTU (Aluminium)



> RTU (Steel)



> CTU



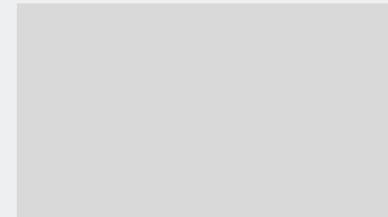
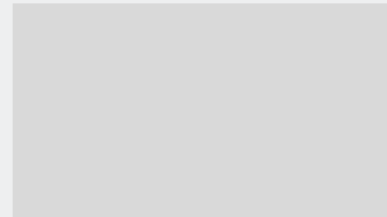
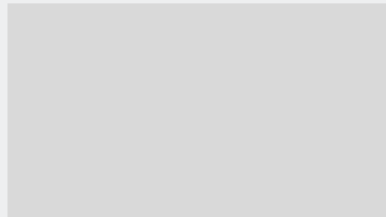
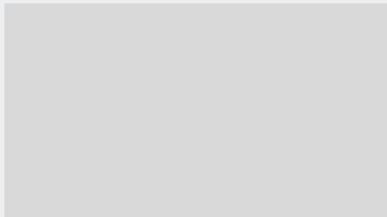
Circular Systems



> AXNRO



> AXNRQ

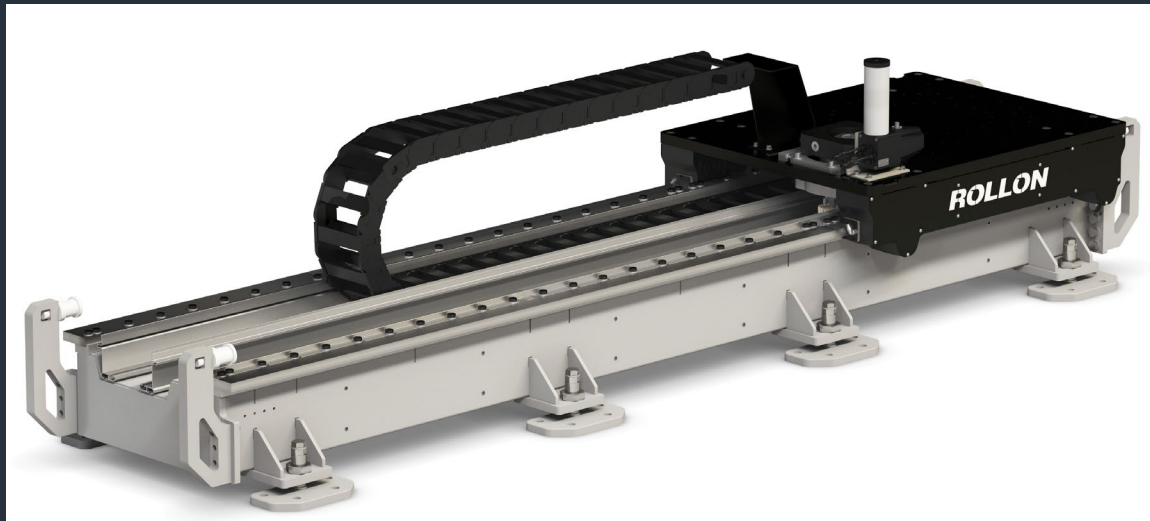


Robot Transfer Unit

Rollon's Robot Transfer Unit (RTU) is a solution designed to extend the operating area of robots in industrial robotics, enabling greater efficiency in automated production lines.

Thanks to the robustness of their steel or aluminium structures, solutions in the RTU range support fast and precise movements over long distances, improving robot performance in complex industrial applications. These motion systems are essential for increasing the operating range of robots:

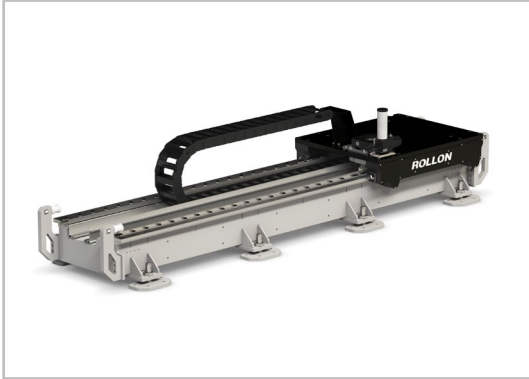
RTU STEEL PROFILE



RTU ALUMINIUM PROFILE



14 Sizes available: from the cobots to the largest robots (2000 Kg)



RTU Steel Profile

Rack and pinion driven shuttle system for moving large robots and heavy loads. The highly engineered bases from steel allows for optimal high stiffness and load capacity

Sizes: 10, 20, 30.



RTU Open Belt, aluminium profile

Robotic transfer unit with aluminium body and open belt driven for loads up to 20 kg.

Sizes: 120-1S, 160-1S, 220-1S.



RTU Sealed Belt, aluminium profile

Robotic transfer unit with aluminium body and close belt driven for loads up to 20 kg.

Sizes: 80-2, 110-2.

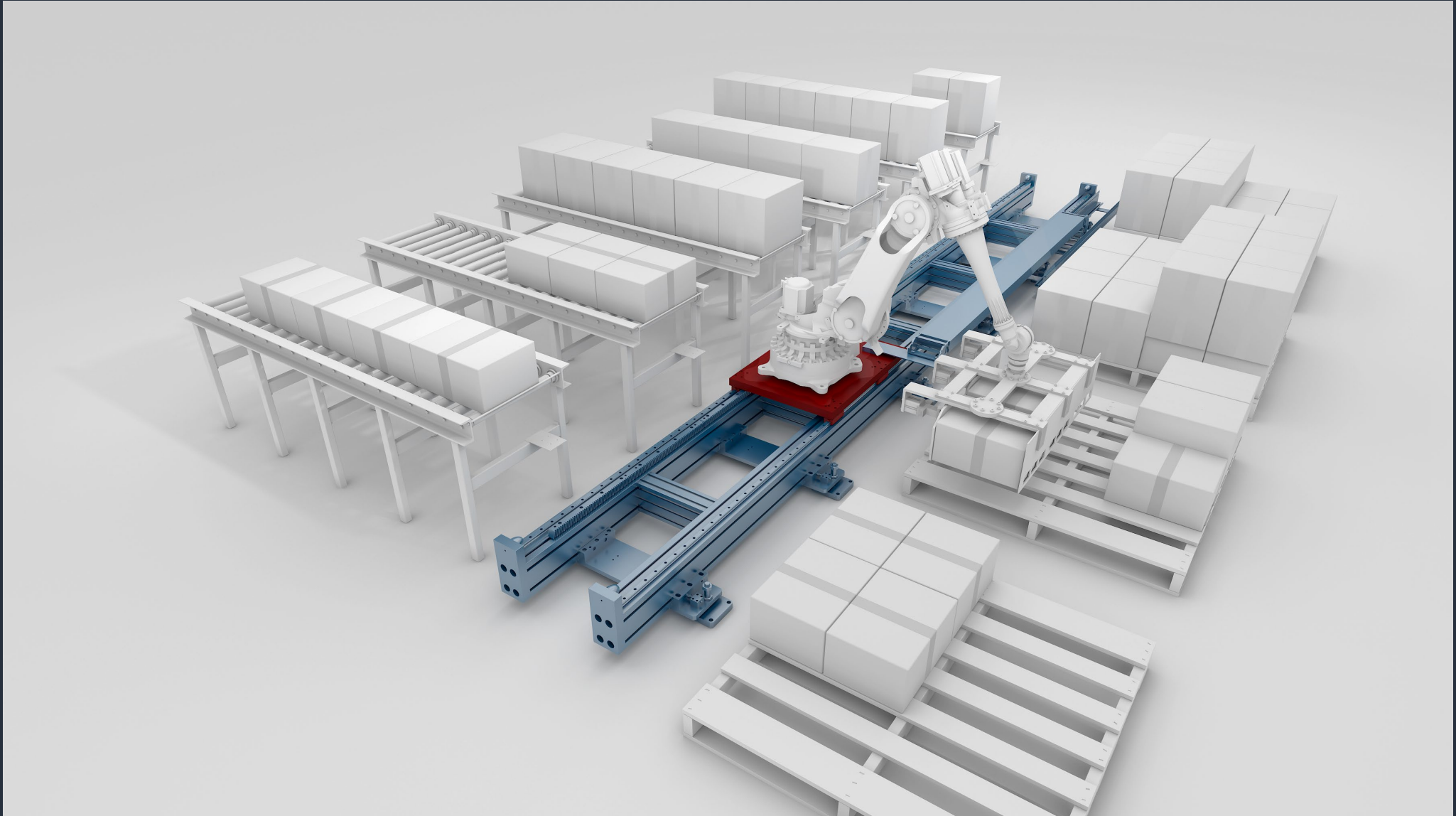


RTU aluminium profile

Belt, rack and pinion driven shuttle system for moving with high dynamics every model of robot, from the smallest cobot to the largest robots.

Sizes: 170-2, 170P-2, 280-1, 280-2, 280P-2, 360-2.

RTU applications: Pick and Place



RTU applications: Painting



RTU applications: Machines Tools feeding





A dark blue world map with several small blue diamond markers indicating global locations. The markers are located in North America, South America, Europe, India, China, and Japan.

Luca Brioni
Senior Sales Manager
Actuators & Systems BU

+39 3482815293

luca.brioni@rollon.com



ROLLON®

BY TIMKEN



durbal



TIMKEN®